



**Echo Close**

Maidstone | ME15 8TZ



**REAL ESTATE**

ESTATE AGENCY : REDEFINED

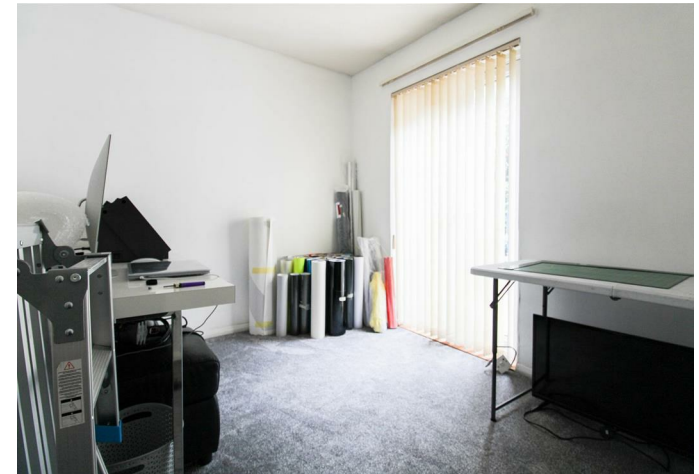
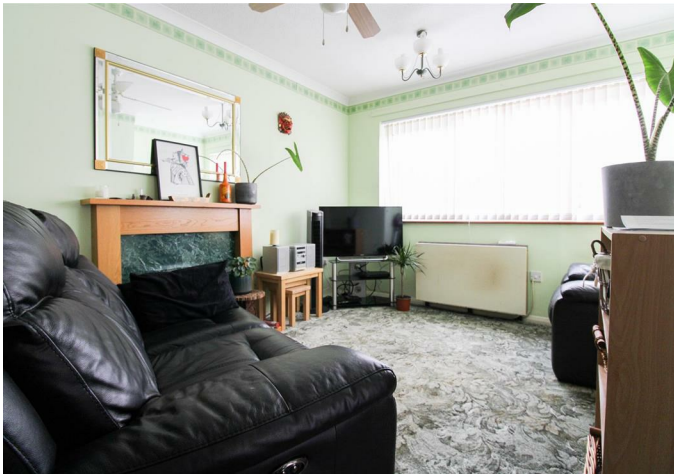


# Echo Close , Maidstone, ME15 8TZ

CR Real Estate are delighted to offer for sale this retirement bungalow situated in a quiet cul-de-sac location in Maidstone. The property is offered to the market with NO ONWARD CHAIN. Benefits include a spacious lounge, two double bedrooms, modern bathroom and kitchen. This property also offers a low maintenance garden to the rear as well as communal parking to the front. Please call us now to arrange your appointment to view.

- Two Double Bedrooms
- Low Maintenance Garden
- Cul-De-Sac location
- Call Now To View
- Semi Detached Bungalow
- No Onward Chain
- Modern Kitchen & Bathroom
- Council Tax Band B

£250,000





Entrance Hall

Living Room

13'11 x 10'8 (4.24m x 3.25m)

Kitchen

10'1 x 7'6 (3.07m x 2.29m)

Bathroom

6'9 x 6'3 (2.06m x 1.91m)

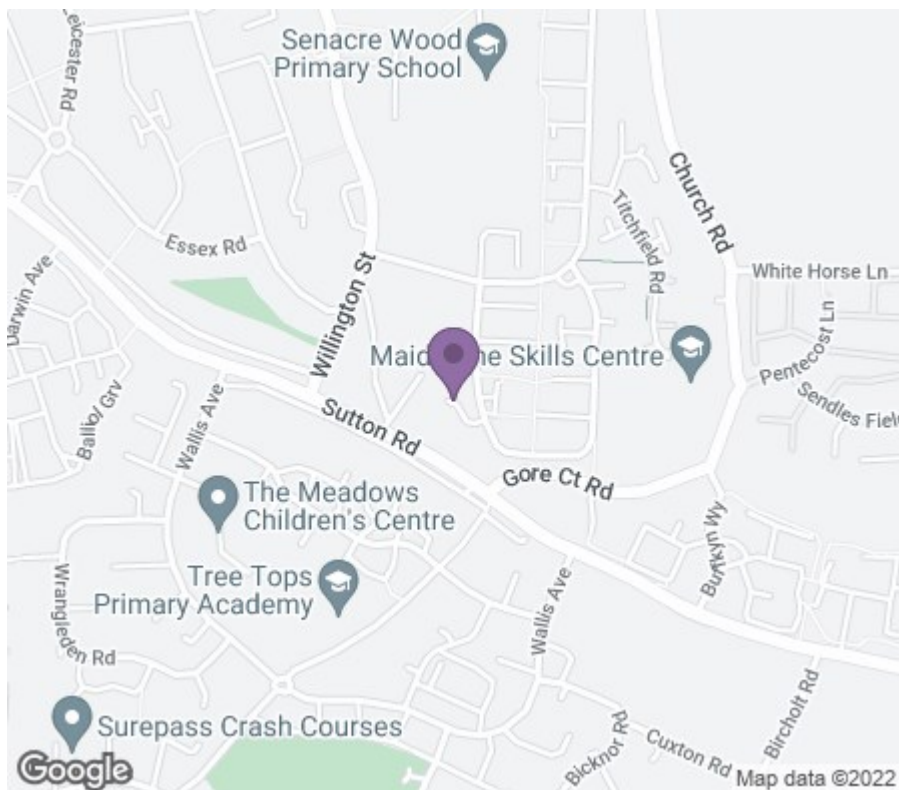
Bedroom

12'1 x 8'8 (3.68m x 2.64m)

Bedroom

10'5 x 8'4 (3.18m x 2.54m)





18 - 20 High Street  
Gillingham

Kent  
ME7 1BB

01634 570057

[www.crralestate.co.uk](http://www.crralestate.co.uk)

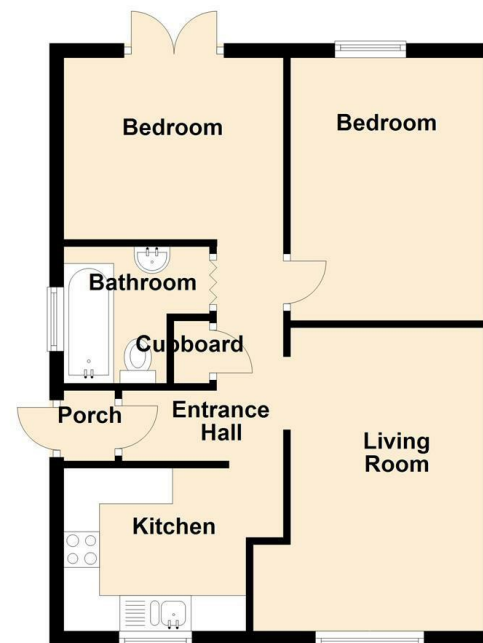
[twitter.com/CRRRealEstateUK](https://twitter.com/CRRRealEstateUK)

[facebook.com/CRRRealEstateUK](https://facebook.com/CRRRealEstateUK)



## Ground Floor

Approx. 47.5 sq. metres (511.7 sq. feet)



Total area: approx. 47.5 sq. metres (511.7 sq. feet)

Energy Efficiency Rating		
	Current	Potential
Very energy efficient - lower running costs		
(92 plus) A		89
(81-91) B		
(69-80) C		
(55-68) D		57
(39-54) E		
(21-38) F		
(1-20) G		
Not energy efficient - higher running costs		
England & Wales	EU Directive 2002/91/EC	

Environmental Impact (CO <sub>2</sub> ) Rating		
	Current	Potential
Very environmentally friendly - lower CO <sub>2</sub> emissions		
(92 plus) A		
(81-91) B		
(69-80) C		
(55-68) D		
(39-54) E		
(21-38) F		
(1-20) G		
Not environmentally friendly - higher CO <sub>2</sub> emissions		
England & Wales	EU Directive 2002/91/EC	

CR Real Estate endeavour to maintain accurate depictions of properties in Virtual Tours, Floor Plans and descriptions, however, these are intended only as a guide and purchasers must satisfy themselves by personal inspection.